



DEALBHÓIREACTH
BHAILE ÁTHA CLIATH
SCULPTURE
DUBLIN



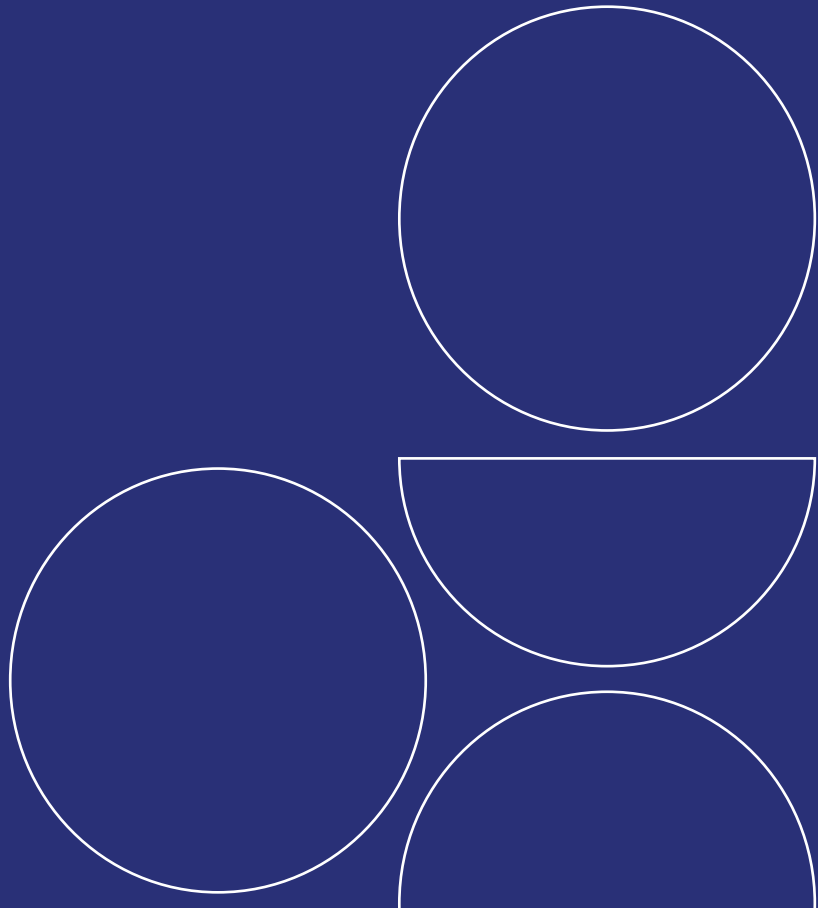
Comhairle Cathrach
Bhaile Átha Cliath
Dublin City Council

A Sculpture Dublin
Public Art Commission

BUSHY PARK

A Two-Stage Open
Competition

Stage One Briefing
Document for Artists



CONTENTS

| | |
|---------------------------|----|
| INTRODUCTION | 3 |
| INVITATION | 3 |
| CONTEXT OF THE COMMISSION | 3 |
| THE COMMISSION | 4 |
| THE SITE | 4 |
| TECHNICAL PARAMETERS | 5 |
| FINANCE | 5 |
| SITE VISIT / BRIEFING | 5 |
| QUERIES | 5 |
| SELECTION PROCESS | 5 |
| SELECTION PANEL | 5 |
| SELECTION CRITERIA | 6 |
| SUBMISSIONS – STAGE ONE | 6 |
| SUBMISSIONS – STAGE TWO | 7 |
| SCHEDULE | 7 |
| GENERAL CONDITIONS | 7 |
| TERMS AND CONDITIONS | 8 |
| GDPR COMPLIANCE | 8 |
| APPENDICES | 10 |

INTRODUCTION

Sculpture Dublin aims to raise awareness of Dublin's sculptural heritage and to commission new works in parks and public spaces city-wide. It is a Dublin City Council initiative, developed by Parks and Landscape Services and the City Arts Office, and supported by the Hugh Lane Gallery and Visual Artists Ireland.

Dublin City Council will commission a public sculpture in each of the DCC administrative areas: North West, North Central, Central, South Central and South East. The curatorial framework for Sculpture Dublin is structured around the specificities of each commission site, with emphasis on context, user-communities and physical or architectural characteristics.

The commission for the South East Area will be developed in Bushy Park, Dublin 6W.

INVITATION

This commission invites artists to respond to Bushy Park, a substantial suburban park that accommodates a variety of recreational uses within the remains of a historic demesne landscape. Bushy Park is characterised by its topographical diversity and interest. Fresh prospects reveal themselves around every corner, sustaining curiosity and discovery. Artists are asked to explore Bushy Park, its assorted terrains and contemporary uses, and identify a space within the park that resonates with them. A work of scale might be imagined for an open expanse of grassland, or a modest woodland intervention, water feature or folly. Importantly, the site must speak to you and your work and provoke a sensitive and considered aesthetic response. You might choose to draw the eye close to detail or open up a new and surprising vista. Ultimately, the work should encourage a new encounter with nature and provoke a moment of wonder that will enhance and refine the meaning of the chosen location.

Through a [two-stage open competition](#), Sculpture Dublin asks artists to propose a new permanent public artwork for Bushy Park. [Stage One](#) calls for artists to submit proposals for a sculpture to be installed in the park in August 2021.

CONTEXT OF THE COMMISSION

Bushy Park is a well-used, multifunctional public park situated between the suburbs of Terenure, Templeogue and Rathfarnham, predominantly used by local residents. The park is notable for the variety of landscapes and uses that it accommodates. In addition to sports facilities and amenities, it incorporates ornamental water gardens, woodland walks, naturalistic riverbanks and open grassland. An extensive network of pathways demarcates its perimeter and criss-crosses the centre of the park. These are popular with walkers, joggers and dog-walkers.

Many sporting clubs and schools in the area use the flat playing fields and sports pitches on the Templeogue Road side of the park for recreational activities. These include Terenure Rangers FC, Templeogue Synge Street GAA, Bushy Park Rangers and Sportsworld Running Club. Bushy Park Tennis & Padel Club is home to 11 courts, and is located beside the purpose-built skate park (Dublin's first, opened in 2006) and boules/pétanque pitches. A large children's playground, featuring a zip-line, is situated in the centre of the park, and plans to develop new tea-rooms close by are in place.

From this level the park slopes downhill into a landscaped outdoor amphitheatre with a mid-century bandstand below. Behind the belt of trees to the left is a large ornamental duck pond, complete with water-features, an artificial island and resident water-fowl, while behind and to the right stretches a wild, densely wooded area that includes a series of small natural lakes, the River Dodder and its banks. The latter have made this part of the park a popular location for nature-watchers, with kingfisher, heron, otters,

and bats often spotted by the river. Angling for trout is also possible. The riverside paths here are flanked by well-tended lawns on the Dodder View by-pass road, and they join up with one of Dublin's most extensive walks, the River Dodder Linear Park. A native tree trail is also a feature of the park, as are weekly Park Runs and a popular artisan food market that takes place on Saturdays from March to October.

Present-day Bushy Park forms part of the original parkland surrounding Bushy Park House. Built in the early eighteenth century, its most high-profile tenant was Sir Robert Shaw (1774-1894), a successful financier and politician. He inherited the house through his wife, Maria Wilkinson, and in its heyday the estate encompassed a swathe of pastureland from Rathfarnham to Crumlin. The house passed from them by descent through the Shaw family to its final private owner, Mrs Frances Shaw, paternal grandmother of the renowned Irish playwright and polemicist George Bernard Shaw. Following her death, the house and remainder of the estate were purchased by Dublin Corporation in the 1950s, with the house and part of the land sold for the establishment of Our Lady's School shortly thereafter. A segment of the school grounds and Bushy Park House were acquired by a property developer in the late 1990s, and the house was subsequently converted into apartments as part of a private housing development.

Commissioning a new artwork for Bushy Park presents artists with a rare opportunity to engage with an open brief. Intentionally broad in scope, it encourages artists to visit the park, survey it and observe its myriad uses; then to form a relationship with a particular space within it and select the location they feel demands some form of sculptural response. It envisages that the commission will facilitate a more meaningful interaction between people and place.

For more information about Bushy Park, including maps and photographs, see **Appendix 1**.

For a historical overview of the park, see **Appendix 2**.

For further reading, see the bibliography in **Appendix 3**.

The Sculpture Dublin programme, its vision and values, provide a further frame of reference for the commission. Information on Sculpture Dublin is included in the 'About' page of the website.

THE COMMISSION

The creation of a sculpture to be sited within Bushy Park is the central focus of this commission. However, the completed work may evolve through a variety of artistic approaches and/or incorporate works made in other artforms, e.g. one-off artistic interventions, collaborative projects, workshops, inter-disciplinary responses, time-based or digital works, etc. Proposals for works in any material medium are welcome.

A local public engagement programme will be developed around the artwork and the commissioned artist will be invited to contribute to this.

THE SITE

Bushy Park covers a 20.5 hectare (51 acre) site that lies approx. 7km (4.3 miles) south-west of Dublin city centre. Owned and operated by Dublin City Council, it is located in Terenure and borders the neighbouring suburbs of Rathfarnham and Templeogue. Irregularly shaped, it lies between Templeogue Road, Springfield Road, Dodder View Road, Rathfarnham Road and Rathdown Park / Avenue. The River Dodder flows along the park's boundary from west to east, with its southern bank forming part of the Dodder Valley Linear Park which stretches discontinuously from Glenasmole in the Dublin Mountains to Ringsend, where the Dodder flows into the River Liffey.

Rather than specify a particular location within the park, this commission asks artists to familiarise themselves with its various aspects and then propose a site for the situation of their work. The precise location of the selected work will be decided in consultation with the commissioners.

TECHNICAL PARAMETERS

The technical parameters of the proposed site will be assessed by Dublin City Council following receipt of Stage Two submissions. The final location of the commissioned artwork will be subject to consultation with Dublin City Council Parks & Landscape Services.

FINANCE

The total budget for this commission is €100,000. This includes VAT. Budget management is the responsibility of the commissioned artist and is fully inclusive of all costs, e.g. fees (including time, consultation, expenses, third-party expertise), insurance, design, materials, site preparation, production, transport, installation, documentation and taxes, unless otherwise negotiated with Dublin City Council and stated in the commission contract. Shortlisted artists will be paid a fee of €1,000 for completing the Stage Two submission/application process.

SITE VISIT / BRIEFING

A site visit for interested artists will take place in Bushy Park, at the bandstand, at **12 noon on 21 August 2020**. The briefing will include a question and answer session, and will be filmed and posted on Vimeo.

QUERIES

Artists are welcome to submit queries about this brief and the commissioning process to **Karen Downey** by **12 noon on 28 August 2020**. Please email any enquiries to commissions@sculpturedublin.ie with "Query: Sculpture Dublin – Bushy Park Commission" as a reference in the subject line.

SELECTION PROCESS

This is a two-stage, open competition. The closing date for Stage One submissions is **12 noon on 4 September 2020**. Any incomplete submissions or entries received after this time will not be considered.

All submissions will be checked to ensure completeness before progressing for review by the Selection Panel. If a high volume of submissions is received, a Longlisting Panel will be convened to select a long list of up to fifteen proposals.

The Selection Panel will then evaluate submissions against the Selection Criteria (see below) and choose a shortlist of up to five proposals. Shortlisted artists will be invited to make a more detailed Stage Two proposal. Following receipt of second stage proposals, the Selection Panel will make a final decision.

SELECTION PANEL

The Selection Panel for the Sculpture Dublin – Bushy Park Commission will consist of some or all of the following:

1. Representative of DCC Parks and Landscape Services;
2. Representative(s) of the City Arts Office;
3. Representative of the Hugh Lane Gallery;

4. Member of the Sculpture Dublin Steering Group;
5. External expert (artist/curator);
6. South East Area public representative;
7. Local Terenure/Tempelogue/Rathfarnham community representative.

SELECTION CRITERIA

The assessment criteria relate to all Stage One submissions. Proposals will be assessed by the Selection Panel using the following criteria:

- Quality and originality of artistic ideas;
- Concept and relevance to the commissioning context and choice of site;
- Proven experience of the individual or team;
- Technical and financial feasibility of the proposal.

SUBMISSIONS - STAGE ONE

Stage One is open to all interested artists. Applicants are invited to familiarise themselves with the commission brief and attend the site visit / briefing (or view the latter online if unable to attend) before preparing their submissions.

Submissions should be submitted electronically via the Sculpture Dublin website:
www.sculpturedublin.ie

Artists should provide the following information as part of their submission:

- 1. Contact information** (name, address, email address and phone number).
To be entered into an online form on the Sculpture Dublin website.
- 2. CV:** please submit an up-to-date curriculum vitae.
Maximum 3 pages to be uploaded as a single PDF document to the Sculpture Dublin website.
- 3. Documentation of work:** please submit up to 5 examples of relevant previous work, including written descriptions, photographs, and where appropriate, links to videos hosted on Vimeo.
All information should be compiled into a single PDF document to be uploaded to the Sculpture Dublin website.
- 4. Proposal:** outlining each of the following:
 - Artistic vision for the commission (concept, process and proposed work);
 - How the vision for the work relates to the context and site;
 - Visualisations and descriptions of the proposed work (i.e. visual material, technical drawings, working methodology, installation etc.);
 - An outline project plan, budget and timeline.

All Proposal information should be compiled into a single PDF document to be uploaded to the Sculpture Dublin website.

Please note:

- Submissions for this opportunity will ONLY be accepted via the Sculpture Dublin website: www.sculpturedublin.ie
- All 4 parts of the application must be completed: Contact information, CV, Documentation and Proposal.
- The maximum file for each PDF is 25MB.

SUBMISSIONS - STAGE TWO

Stage Two will comprise of a limited competition with up to five shortlisted artists invited by the Selection Panel to make submissions. A detailed brief will be issued for this stage. Shortlisted artists will be requested to provide a more comprehensive analysis of the concept, methodology, technical information, time frame and finances of their proposal in Stage Two. Artists may be invited to attend an interview with the Selection Panel before a final selection is made.

SCHEDULE

| | |
|-----------------------------------|--|
| 6 July 2020 | Open Call for proposals. |
| 21 August 2020 | Site Visit / Briefing Meeting. |
| 28 August 2020 | Queries submitted. |
| 4 September 2020 | Closing Date for Stage One Submissions. |
| 7 September-2 October 2020 | Selection Process – The Selection Panel will meet and select a shortlist of up to five artists, who will be invited to make a more detailed Stage Two proposal. |
| 30 October 2020 | Closing Date for Stage Two Submissions. |
| November 2020 | Selection Process – The Selection Panel will agree the selection of one proposal, leading to the engagement of the commissioned artist and signing of contracts. |
| December 2020-July 2021 | R&D and Production. |
| August 2021 | Installation and unveiling of the completed commission. |

GENERAL CONDITIONS

- Artists can apply for ONE Sculpture Dublin commission only.
- Artists can submit ONE proposal only per Sculpture Dublin commission.
- Late submissions will not be considered under any circumstances.
- As this is a two-stage open competition, no fees will be paid for Stage One submissions. Shortlisted artists will receive a fee for the development of Stage Two proposals.
- No feedback will be given on Stage One proposals. Artists selected to develop their proposals for Stage Two will be provided with feedback if requested.
- The Selection Panel's decision is final, and it reserves the right to contact applicants in order to clarify any issue which may arise in the course of the selection process.
- Artists or teams may be asked to supply the names and contact details of referees as part of the selection process.
- Dublin City Council reserves the right not to award commissions and in this instance reserves the right to pursue other selection processes.

TERMS AND CONDITIONS

- The sculptural element of the completed artwork must be deemed 'permanent', i.e. with a lifespan of no less than 20 years.
- The final location of the commissioned artwork will be subject to consultation with Dublin City Council Parks & Landscape Services.
- The successful artist/team will be issued with a contract.
- The appointed artist/team will be required to have the following insurances:
 - a. Public Liability Insurance cover of €6.5 million with an indemnity to principal extension
 - b. Employers Liability Cover of €13 million with an indemnity to principal extension (where employees are engaged to work on the Commission).
 - c. Please note: The Commissioners will **not** insure equipment belonging to the artist or their associates.
- The artwork must comply with Health and Safety standards. The successful submission will be subject to Health and Safety checks.
- Child and Vulnerable Adults Protection: The selected artist/team will be required to follow national policy with regard to commissions involving interaction with children, young people and/or vulnerable adults and, where applicable, to undergo Garda vetting or training in this area, as per national requirements.
- The appointed artist/team will have to supply a current Tax Clearance Certificate prior to signing of contract and for the duration of the commission.
- Applicants should note that all commissions awarded are VAT inclusive (whether VAT liability lies with the artist or the Commissioner). Non-resident artists from EU and non-EU countries must be aware of any tax or VAT implications arising from the commission and ensure that any costs arising from this are included in their budget.
- Dublin City Council is subject to the provisions of the Freedom of Information Act (FOI) 1997, 2003. If you consider that any of the information supplied by you is either commercially sensitive or confidential in nature, this should be highlighted in your submission and the reasons for the sensitivity specified. In such cases, the relevant material will, in response to a FOI request, be examined in the light of the exemptions provided for in the Acts.

GDPR COMPLIANCE

The purpose for processing the data you provide is for the selection of a new public sculpture for Bushy Park. The information you provide will be accessed by the staff of Sculpture Dublin, Dublin City Parks & Landscape Services, the Arts Office and invited external specialists, and may be shared with other relevant Dublin City Council staff. Your information will be retained for 6 years if successful and 1 year if unsuccessful with your application. This process is being undertaken in accordance with the Arts Act 2003.

If you do not furnish the personal data requested, Dublin City Council will not be able to process your application. You have the following rights, in certain circumstances and subject to applicable exemptions, in relation to your personal data:

- The right to access the personal data that we hold about you, together with other information about our processing of that personal data
- The right to require us to rectify any inaccuracies in your personal data.
- The right to require us to erase your personal data.
- The right to request that we no longer process your personal data for particular

purposes.

- The right to object to our use of your personal data or the way in which we process it.

Please note that to help protect your privacy we take steps to verify your identity before granting access to personal data. If you would like to exercise any of these rights, please submit a request to Dublin City Council's Data Protection Officer outlining the specific details of the request: Email: dataprotection@dublincity.ie | Tel: 01 2223775. All valid requests will be processed without undue delay and in any event within one month of receipt of the request. This period may be extended by up to two further months where necessary.

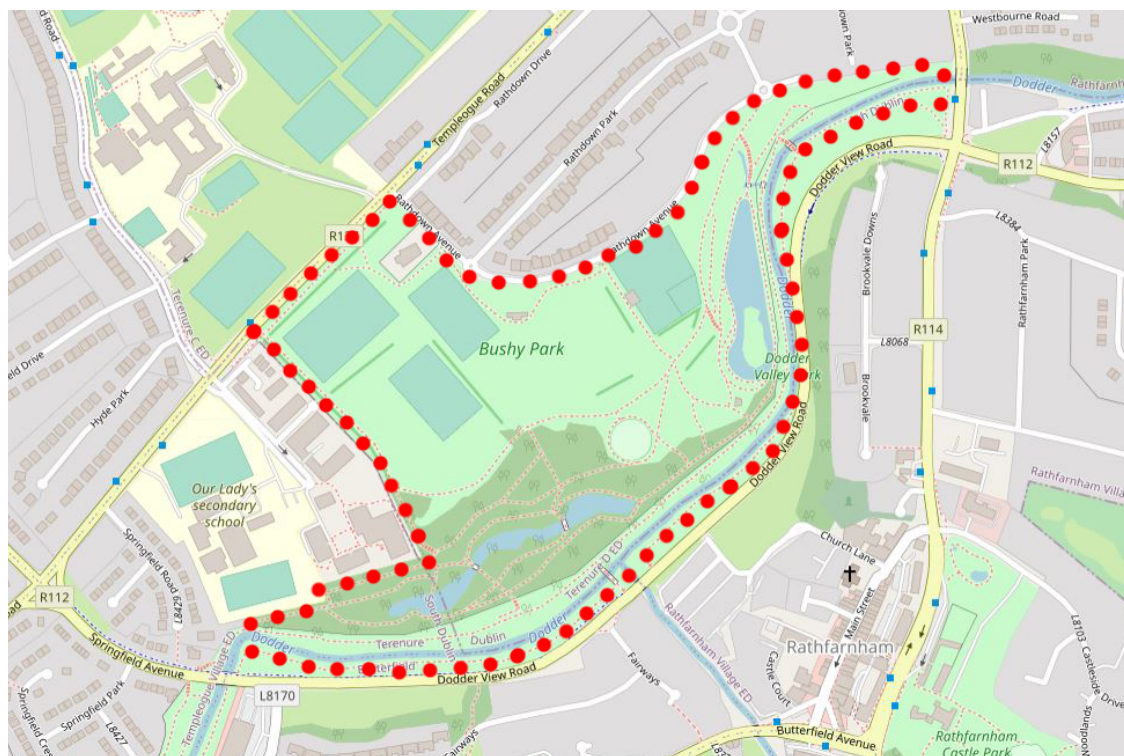
APPENDIX 1

BUSHY PARK: PRESENT-DAY CONTEXT

Bushy Park is located in the heart of residential Dublin 6W, a mature postcode largely made up of detached and semi-detached private single family residences built from the late 1920s to 1960s, with some more recent apartment developments dating from the late twentieth and early twenty-first centuries. The park has numerous pedestrian entrances from Templeogue Road, Rathdown Avenue and Rathfarnham Road, as well as a footbridge and set of stepping stones that provide access to the main body of the park from the south bank of the River Dodder.

Aspects of the surrounding area include:

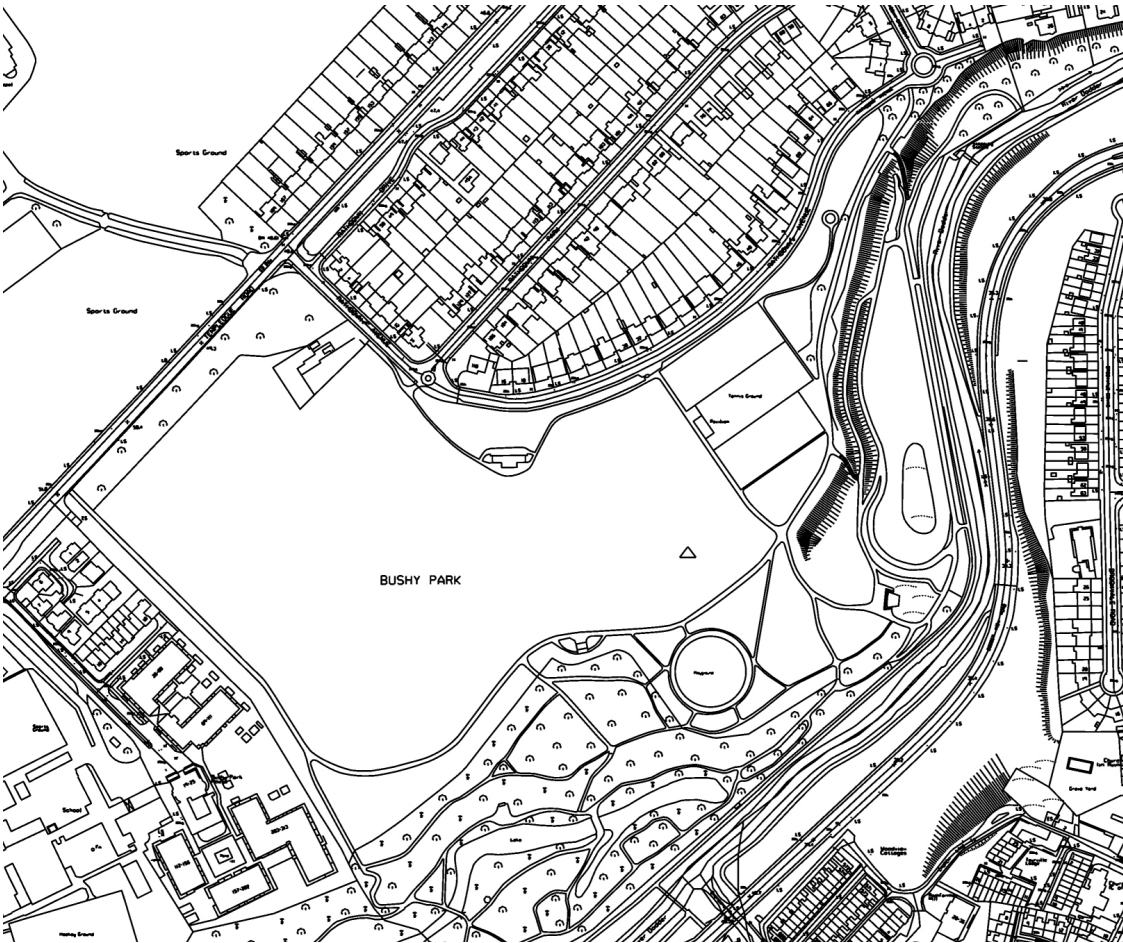
- Terenure, Rathfarnham and Templeogue villages
- local businesses, shops, shopping centres, pubs, cafés and restaurants
- community groups (residents associations, active retired, heritage, etc.)
- schools (numerous primary and second-level)
- religious communities and places of worship (Catholic, Protestant, Jewish, etc.)
- sports clubs and organisations
- other parks and recreational spaces



OpenStreetMap view of Bushy Park, June 2020.



OpenStreetMap satellite view of Bushy Park, June 2020.



Dublin City Council map of Bushy Park and surrounds, 2020.









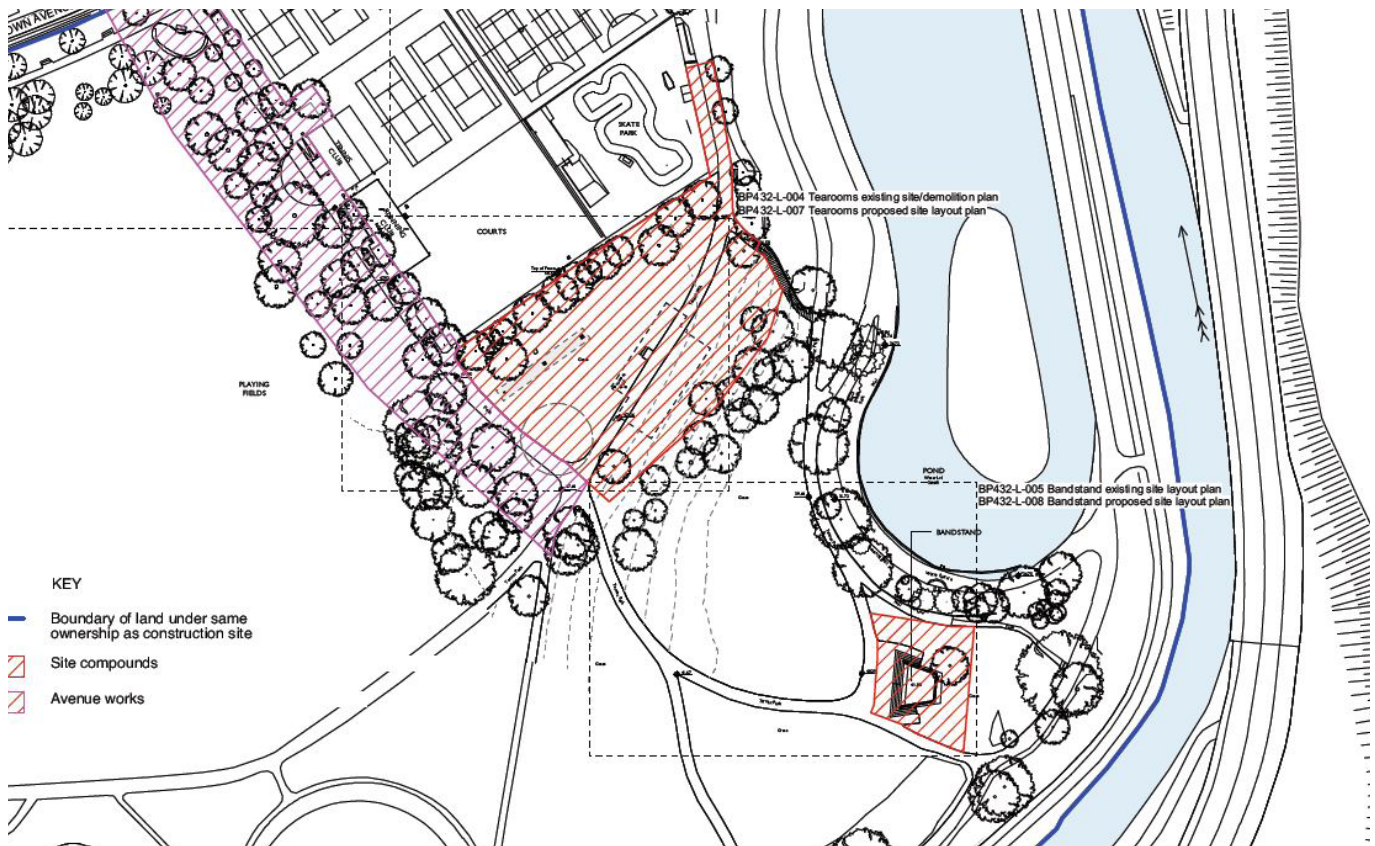








Visualisation of new tearooms, Howley Hayes Architects.

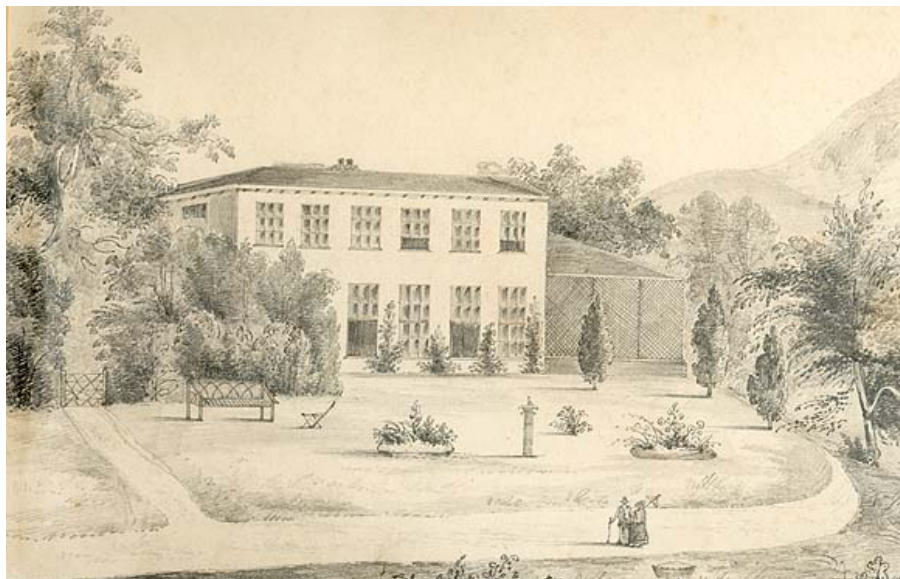


Map detailing location of new tearooms.

APPENDIX 2

BUSHY PARK: HISTORICAL CONTEXT

Bushy Park originated in the year 1700, when Mr. Arthur Bushe of Dangan, Co. Kilkenny – then Secretary to the Revenue Commissioners – bought the surrounding lands and built Bushy Park House on a site of 4 hectares (10 acres). Bushe's House, as it was then known, was an elegantly proportioned three-storey over-basement Georgian house with a plain façade. In 1772 the property was acquired by a John Hobson, who changed the name of the house to Bushy Park, possibly after the then-fashionable park of the same name near Hampton Court Palace in London. Aptly, this park gained its name from the Old English word *bysce*, meaning 'thickly wooded and bushy'.



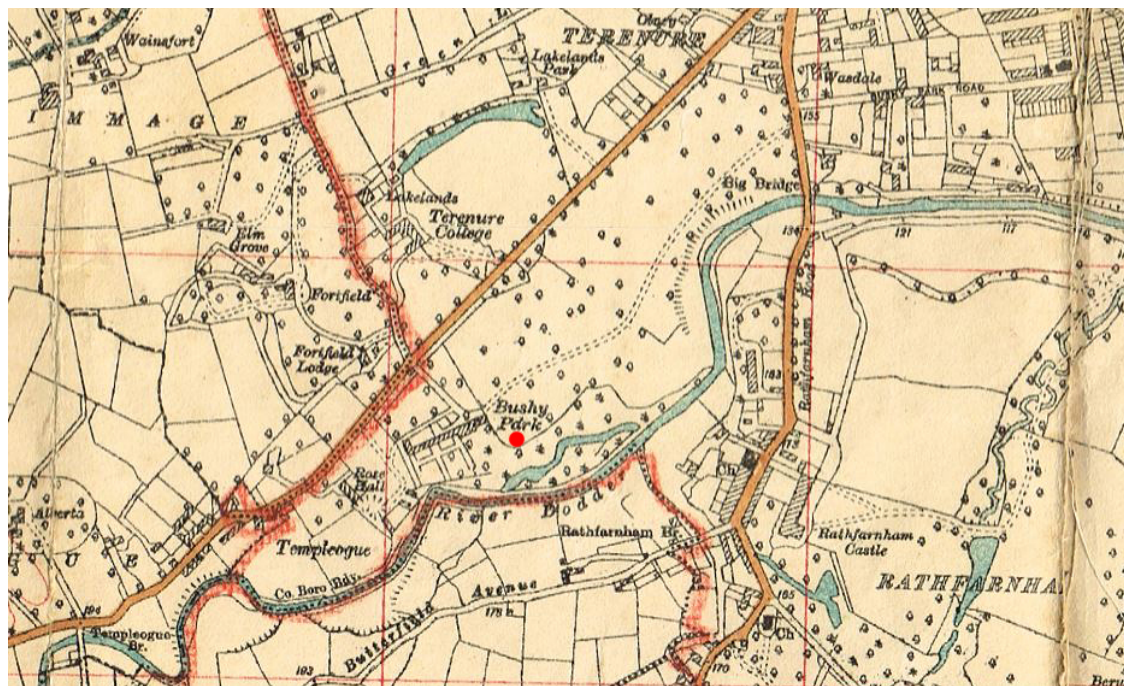
Bushy Park House, Selina Crampton (1806-1876). Image courtesy of the National Library of Ireland.

In 1791 the estate was extended considerably when Abraham Wilkinson purchased the house, its parkland, and an additional 40 hectares (99 acres) extending into parts of Kimmage, Crumlin, Roundtown (Terenure) and Rathfarnham. Unlike today, these were mostly farmlands. Much of the demesne was leased to tenants to generate income, which in turn would have been used to maintain the family home. In 1796 Wilkinson gave Bushy Park House and estate as a dowry to his only child, Maria, on her marriage to Sir Robert Shaw (1774-1894), of neighbouring Terenure House (now Terenure College, a private boys' secondary school).

Sir Robert came from a prominent family of the Protestant Ascendancy. His great-great-grandfather, William Shaw, had come to Ireland to fight for King William in the Battle of the Boyne in 1689, and was rewarded by a grant of land in Meath. Robert Shaw's father, a prosperous merchant who became Accountant General of the Post Office, moved to Dublin in the mid-1700s and bought Terenure House. Sir Robert assumed membership of the Guild of Merchants aged 21 and was later elected as their representative to the City Assembly (the forerunner of today's City Council). A foremost financial expert of his day, he owned his own bank – Robert Shaw & Son – on Foster Place in Dublin city centre and was an MP from 1804 to 1826. He was conferred with a Baronetcy in 1821 by King George IV during his visit to Dublin, and elected Lord Mayor of Dublin in 1851.

In the early 1800s Sir Robert had remodelled the front and northern wing of Bushy Park House, adding large ground-floor windows and external shutters. The south side of the building housed large enclosed gardens (where much of the modern-day park is

located), while 100 acres of parkland extended north to present-day Terenure village. A long, picturesque avenue led to Rathfarnham Road, while a short avenue was laid out to Fortfield Road.



Map showing Bushy Park in the mid-twentieth century. 1934 OS Dublin and Environs, 1:2000 scale.

Bushy Park House remained the seat of the Shaw family until it, and the remains of the accompanying estate, were sold to Dublin Corporation in 1951. Its last occupant, Mrs Frances Shaw, was the paternal grandmother of the Irish playwright and polemicist George Bernard Shaw. She lived in Bushy Park House for 45 years, and her grandson was a regular visitor. In 1953 the house and 8 hectares (19.5 acres) of grounds were sold by the Corporation to the Sisters of Religious of Christian Education, who used the original house as a convent and opened Our Lady's School (a girls' secondary school) in new, purpose-built school buildings on the adjoining site in the same year. 2 acres of woodland were re-acquired by Dublin City council in 1993 and incorporated into the public park. A 7.1 acre site on the school's grounds was sold to private developers in 1998, and in the early 2000s five blocks of two and three-bedroom apartments, and a series of four-bedroom houses, were built. Bushy Park House itself is a protected structure, and in 2016 permission was granted to convert it into 16 apartments.

APPENDIX 3

BIBLIOGRAPHY

Farrell, S. (n.d.) *SHAW, Robert, of Bushy Park, Co. Dublin*. Available online from <https://www.historyofparliamentonline.org/volume/1820-1832/member/shaw-robert-1774-1849>.

Dublin City Council Parks and Landscape Services (n.d.) *Bushy Park*. Available online from <http://www.dublincity.ie/main-menu-services-recreation-culture-dublin-city-parks-visit-park/bushy-park>.

Dublin City Archives (2017) *The Shaws of Bushy Park, Terenure*. Available online from <https://www.dublincity.ie/story/shaws-bushy-park-terenure>.

Dublin City Council Libraries and Archive (2010) *Bushy Park House*. Available online from <https://www.dublincity.ie/dublin-buildings/bushy-park-house>.

Dublin City Council Libraries & Archive (n.d.) *The Shaws of Dublin*. Available online from <http://www.askaboutireland.ie/reading-room/history-heritage/big-houses-of-ireland/the-shaws-of-dublin/>.

Howley Hayes Architects (n.d.) Overview of planned new tearooms for Bushy Park. Available online from <http://www.howleyhayes.ie/projects/bushy-park-tearooms/>.